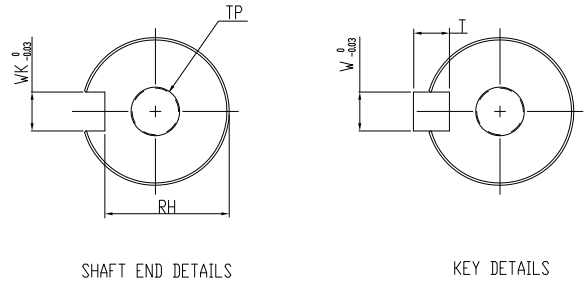


REV.	ECN NO.

DIMENSION TABLE(MODEL WITHOUT BRAKE)

MODEL	LL	LR	LS	S	LW	WK	W	T	RH	TP	LP	LE		
ECMA-C 0804A7	112.3	30	27.0	14	—	—	—	—	—	M4, Depth 15	300	300		
ECMA-C 0804C7					—	—	—	—	—	—				
ECMA-C 0804E7					—	—	—	—	—	—			—	
ECMA-C 0804G7					—	—	—	—	—	—			—	
ECMA-C 0804P7	138.3	35	32.0	19	20	5	5	5	11.0	M4, Depth 15	300	300		
ECMA-C 0804R7					—	—	—	—	—	—			—	
ECMA-C 0807AS					—	—	—	—	—	—			—	M6, Depth 20
ECMA-C 0807CS					—	—	—	—	—	—			—	—
ECMA-C 0807ES					—	—	—	—	—	—			—	—
ECMA-C 0807GS	138.3	35	32.0	19	25	6	6	6	15.5	—	300	300		
ECMA-C 0807PS					—	—	—	—	—	—			—	—
ECMA-C 0807RS	—	—	—	—	25	6	6	6	15.5	M6, Depth 20	—	—		



SHAFT END DETAILS

KEY DETAILS

<b>台灣電子工業股份有限公司</b> <b>DELTA ELECTRONICS, INC.</b>	DRAWN:	DESIGN:
	APPROVE:	DATE: 10/21/2013
THESE DRAWINGS AND SPECIFICATIONS ARE THE PROPERTY OF DELTA ELECTRONICS, INC. AND SHALL NOT BE REPRODUCED OR USED AS THE BASIS FOR THE MANUFACTURE OR SELL OF APPARATUS OR DEVICES WITHOUT PERMISSION.	<b>DIMENSIONAL TOLERANCES</b> ( ) ( ) ( ) ( ) ANGLES DECIMALS <50 ±0.1 <50 ±0.15 <50 ±0.2 <30° ±0.1° X ±0.3 >50-100 ±0.15 >50-100 ±0.2 >50-100 ±0.25 >30°-60±0.3° X.X ±0.2 >100-200 ±0.2 >100-200 ±0.25 >100-200 ±0.3 >60°-90±0.5° X.XX ±0.1 >200 ±0.2 >200 ±0.25 >200 ±0.3	
	DESCRIPTION:	PART NO.:
	MOTOR_F80	
USED ON:	UNIT: mm	SHEET 1 OF 1